

**NEW**  
updated version  
out now!

SUPPORTING THE NEXT GENERATION OF  
**MAC AND LINUX CLASSROOMS.**



**NetSupport Assist** is from the developers of NetSupport School, the award-winning classroom management software product for Windows and Gold winner in the Classroom Management Systems category at the 2015 THE Journal Readers' Choice Awards, plus 2016 Bett Awards finalist.

The addition of Assist to the company's education portfolio saw NetSupport become the first classroom management software vendor to offer compatible solutions across Windows, Mac®, Linux, Chrome OS and tablet environments, providing complete flexibility for mixed platform classrooms.

Recognizing that technology in education is continually evolving, NetSupport Assist benefits from over 26 years of classroom management development expertise to bring you the tools teachers need to centrally instruct, monitor and interact with their students in a dedicated Mac or Linux environment.

Providing the very latest IT infrastructure is only half the equation. Ensuring it is used in the most effective way represents the other half. Combining advanced classroom monitoring with real-time presentation and collaboration tools, NetSupport Assist rises to the challenge and requirements of today's modern classroom.

### Key features

- **NEW** Compatible with tablet based students
- **NEW** Display option to show teachers
- Delta File Transfer
- Send and Collect Work
- Power Management
- Real-time instruction tools
- Student Register
- Real-time thumbnail view
- Remote PC management
- Powerful Student Surveys
- View / control student screens
- Application Metering
- Internet Metering and control
- Group or 1:1 Chat facility



### View Student Activity

Monitor the entire class or selected students with high quality scalable thumbnails of each desktop. Zoom to focus on individuals or click for full 1:1 remote control.

### Group Chat

Share ideas and encourage classroom collaboration by conducting on-screen discussions that include the entire class or just selected students.

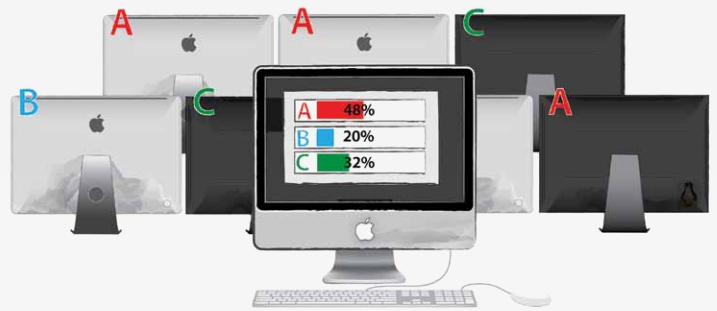
### Send Messages

An effective way to communicate lesson information with all or selected students. The message takes screen focus on the students' desktops.



### Control Internet Use

NetSupport Assist allows teachers to instantly see which sites students are visiting and, if needed, take remedial action to block access.



### Instant Surveys

Ensure students have understood the content covered during the lesson by polling them for instant feedback, collating and displaying results instantly.

### Wired and Wireless Networks

NetSupport Assist is designed to work flawlessly over both wired and wireless networks and, at all times, not impact on network capability.

### Support Tool

Use the Support Tool to supply the school technician with the system information needed to help optimize NetSupport Assist configuration on any teacher or student machine.

### Student Registration

Request standard and custom information for each student at the start of the class, create an attendance report and use the provided details to personalize your lesson.

### Power Management

Power On or Off all classroom computers in a single action from the teacher machine to conserve energy.



To download a FREE TRIAL visit: [www.netsupportassist.com](http://www.netsupportassist.com)



### Real-Time Instruction

Deliver engaging presentations by showing the teacher's screen to each student desktop. Each desktop can also be locked to ensure attention.



### Powerful Remote Control

Take control of the screen, keyboard and mouse of each or any student workstation where teacher assistance is required.



### Move Information

Transfer files between the teacher and student machines using a simple drag and drop interface. Hand out and automatically collect files with each student's details appended.

### Monitor Open Applications

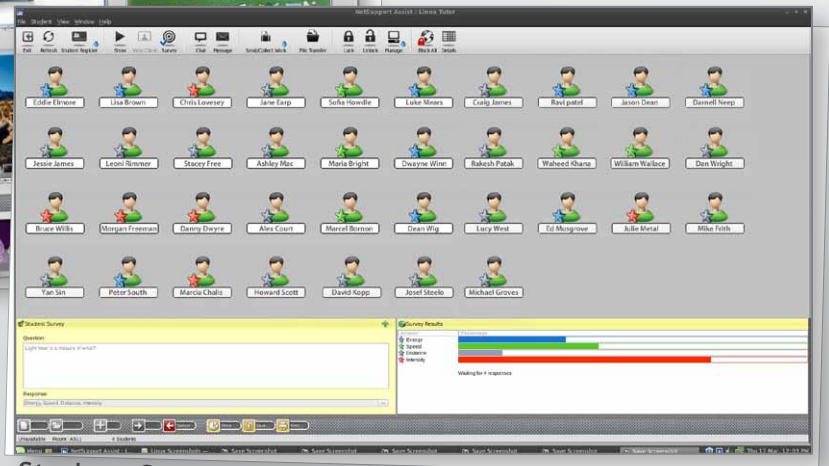
Centrally monitor the applications in use on each and every student machine in real time to ensure the class is always focused on the task in hand.

SUPPORTING THE NEXT GENERATION OF

# MAC AND LINUX CLASSROOMS.



Thumbnail view (Mac)



Student Survey (Tutor view - Linux)



## Central Monitoring and Control of Workstations

Monitor the entire class in a single view with real-time scalable thumbnails of each student desktop.

Optimize network performance by increasing or decreasing the thumbnail refresh rate.

Zoom in for an optimized high-definition view of an individual desktop.

Overlay additional information to highlight the active application or active website.\*

Switch to 'detailed view' for an in-depth list of the applications and websites in use across the class.\*

Block the internet if inappropriate sites are being accessed or simply to stop students being distracted during a presentation.

Compatible with NetSupport School to deliver complete monitoring capabilities for mixed Windows, Mac and Linux environments.

New support of iOS students.  
(\*Mac only).

## Instruct and Collaborate in Real Time

Transfer files to and from a selected machine in a single action using a drag and drop interface.

Hand out and automatically collect files with each student's details appended.

New display options for screen sharing

Avoid the need for expensive display equipment and ensure student focus during a presentation by showing the teacher screen to all or selected student screens.

Deliver your presentations optimized for wireless networks.

Open a discussion session that all or selected students can join, enter their comments and share with the rest of the class.

Use the Message option to send important lesson information or alerts to all or selected student machines. Decide how long the message should be displayed.

Find out if your students have understood the content covered during the lesson. Send a custom survey with pre-defined responses to all or selected students. Instantly see all responses and a summary for the class.

## Powerful Remote Control

Power On or Off all classroom computers from the teacher machine.

Remotely view an individual student's screen to provide direct and discreet 1:1 support.

Choice of remote control modes allows you to share control of or discreetly watch the selected student's workstation.

Send a message to the selected student's screen.

Conduct a two-way chat session with the selected student.

Screen Capture feature enables the teacher to take a snapshot of the currently viewed student screen.

Remotely logout or reboot the currently viewed machine.

## Central Class Management

NetSupport Assist offers a powerful Student Registration feature. Request standard and custom information for each student at the start of the class, automatically create an attendance report and use the provided details within NetSupport Assist to identify each student.

Use thumbnail layouts so the teacher machine represents the layout of the physical classroom.

Blank student screens to gain attention.

Lock one or many students' keyboards and mice when instructing.

Automatically reboot and reconnect to student PCs.

Perform a remote log off on all machines.

## System Requirements

**Linux: Processor:** Pentium 4 or later | **Memory:** 512MB or greater | **Distribution:** Red Hat Enterprise Linux 6, Centos 6, Fedora 12, 13 & 14, OpenSUSE 11.3, 11.4 & 11.7, Ubuntu\Edubuntu 9.04 or later, Mint 9, 10 & 11 and Debian 5 & 6. | **Desktop Manager:** Gnome, KDE or Unity.

**Mac: Processor:** Intel Only | **Operating System:** Mac OS X 10.9 or higher (Mavericks, Yosemite and El Capitan). (Administrator password required to complete this installation.)

**Recommended:** Dedicated graphics card with drivers installed.

**NetSupport**  
sales@netsupportsoftware.com

Authorized Partner: